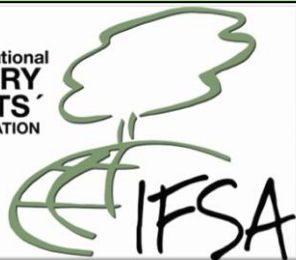


International  
FORESTRY  
STUDENTS  
ASSOCIATION



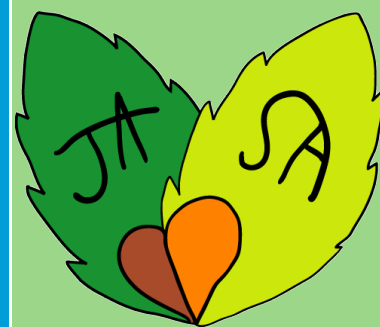
してください]

# JASA NEWS LETTER

Vol.2

[作成者名を入力してください]

2010~2011



IFSA KYOTO UNIVERSITY



# CONTENTS

Preface.....	3
Nara City.....	4
• Todaiji.....	4
• Kofukuji.....	6
• Kasuga-taisha.....	6
Kabata in Harie.....	8

# PREFACE

**Dear JASA members**

Thank you for 2<sup>nd</sup> News letter from your side. That was wonderful! We IFSA Kyoto members can learn about the character of your country again. It was very educational.

I am very glad that this friendship “JASA” has continued so successfully so far. Accordingly, it is excellent that we IFSA-Kyoto can make and share this news letter. It is the only efforts of each JASA members that we can enjoy this partnership.

In this news letter, we introduce about Japanese traditional wooden culture in Nara prefecture. In Nara, there are numerous buildings made by timber. Yuko Azuma will explain to you about how to use timbers in Japan. And Akio Maruyama will tell you about IFSA-Kyoto activity. We visited HARIE region in Shiga prefecture.

Finally, we are looking forward to seeing Natassja in Japan. I hope that this visit will be beneficial for her.

OK, and then Let us go into the News Letter!!

Keep JASA and IFSA spirit,

Takayuki Yamashita  
President of IFSA-Kyoto 2010-2011

**International Forestry Students' Association (IFSA)  
Forest and Biomaterials Science Faculty of Agriculture  
Kyoto University  
Japan**

# NARA CITY

On December, we visited Nara City. It took about 2 hours from Kyoto. Nara City is famous for many historic wooden constructions. There are a lot of deer, because they have been thought as messengers of gods in this city. This area is one of the places which we will visit in ARM. The following temples and shrine are listed UNESCO World Heritage Site as “Historic Monuments of Ancient Nara.”



## Todayji

In Japan they were suffered from a series of disasters and epidemics early in the 8<sup>th</sup> century. The emperor at that time, called “Shomu”, thought that the Buddhism was the only means to heal these troubled times and ordered to construct many provincial temples. Todayji was built in 752 as the main temple of them.



The wooden structure in which the Daibutsu (a statue of Great Buddha) is set is called “Daibutsuden”. A Japanese cypress “hinoki” were mainly used when constructing it. Japanese temples and shrines are often constructed by ‘hinoki’, because it is superior to other trees in the strength and durability.



It was destroyed several times through the centuries. When reconstructing it, zelkovas and cedars were used. That is because there was no big cypress in the mountain near the city. The current building was built in 1709. Daibutsuden is 47 meters high and the largest wooden structure in the world, though it is only two-thirds its original size. It was made of as little wood as could. The architectural style called “Tenjiku Style” was adopted. The style is affected by Chinese one.



The Great South Gate “Nandaimon” is 25 meters high and 29 meters wide. The original one was destroyed by a typhoon. The current gate was reconstructed in the 13<sup>th</sup> century. The wooden wall is partly black because it was oxidized by sunlight. Two big wooden statues “Kongo-Rikishizo” are located there.

## Kofukuji

Kofukuji is the Buddhist temple which was constructed in order to pray the lasting prosperity of the Fujiwara family (this family had a strong power in Japanese politics at that time). The origin of Kofukuji dates from 669. First, it located in Kyoto, but moved to its current place in 710. For a long time, this temple was not only an important center of Buddhism but also had much influence over the government. It was destroyed in 1180 and damaged by fires, so rebuilt several times.

Tyukondo is the central hall of Kofukuji temple. The original building was constructed in 714, but often had been damaged. So, it has been reconstructed several times. The ordinal one was constructed using a zelkova. It was reconstructed in 1811, but it was seriously damaged because of using inexpensive pine. Now it is under reconstruction again, and a *Azela Africana* from Kenya is used for the pillar. That is because it is difficult to get big logs in Japan.



When they construct a building having some floors, they pile up the floors one after another. This architectural style is called 'Tsumiage-housiki (Tsumiage style)'. Tsumiage means to pile up something. It is able to support the weight of the building as a balance does. The building can stand earthquakes partly thanks to this architectural style. Moreover, each timber is using for a different part depending of character. It is the knowledge which is passed on among the carpenters for a very long time.

The carpenters called 'miya-daiku' are essential to reconstruct it. Miya means temples and shrines and daiku means carpenters. They have been taken handed down the traditional unique technique to build temples and shrines. The technique is passed only by the words spoken by men of experience. The Five Storied Pagoda is the second tallest wooden pagoda in Japan, rising 50.1 meters.

The current pagoda is completed in 1426.



## Kasuga-taisya

Kasuga-taisya (Kasuga shrine) is also constructed by the Fujiwara family. From the 8<sup>th</sup> century to the middle of the 19<sup>th</sup> century, Kasuga-taisya and Kofukuji had great authority thanks to Syncretization of Shinto (Japanese unique religion) with Buddhism. The current building dates from 768. It has been repaired once in 20 years. The traditional architectural style “Kasuga-dukuri” was named after Kasuga-taisya. The roof is covered by ‘hiwada’ which is made from bark of Japanese cypress. The vermilion-lacquered pillars and warped roof are affected by architecture of Buddhism. The floor is above the ground in order to keep good ventilation.



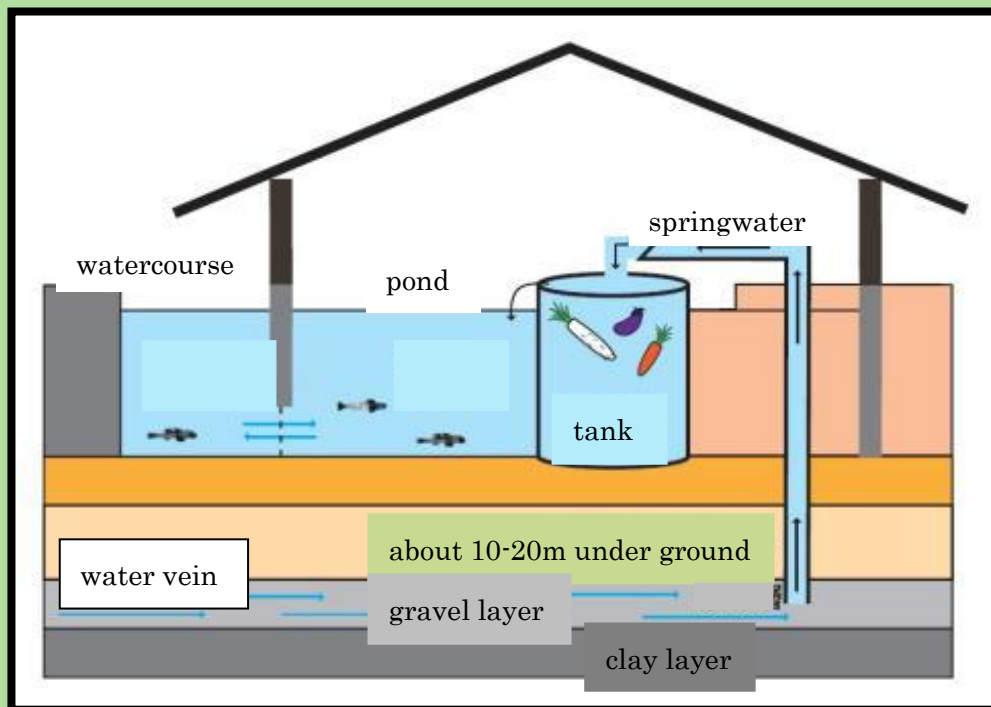
Writer; Yuko Azuma

# KABATA IN HARIE

*Kabata* is traditional unique using water system in *Harie* district. Watercourses flow through houses in Harie. People use this water for keeping vegetables cool and washing dishes, etc.

We went to Harie the 11<sup>th</sup> of February in order to see Kabata.

Chart: flow of water in Kabata



First of all, I explain about *Kabata*. *Kabata* is a unique using water system. Harie has 107 spring water points in houses. In most cases, a steel pipe inserts 20m underground, and water springs from pipe. Where they use the water is *Kabata*. People in Harie use *Kabata* from the old days. Look a chart above. Springwater flow through the pipe to tank. They use the water for keeping vegetables cool and washing dishes. Water flows from tank to Pond. Residents keep carp. These carp eats leftover food and keep water clean. These ponds are connected by watercourses.

We went to *Harie* on 11<sup>th</sup> February. Harie locates in Shiga prefecture. (Shiga prefecture is next door to Kyoto prefecture.) Snow left by road so that it snowed the previous day. Arriving at Harie, we see many watercourses. Its scenery included watercourse is very nice. There are many waterweeds and carp in watercourses. And water in watercourses is very clear.

I think that the system is very interesting because creatures keep water clean.

Kabata is a kind of bioremediation, cleaning by creatures, bacteria or plant. Kabata should be passed from generation to generation so that Kabata is very reasonable cleaning system and has beautiful scenery.



Pictuere: There are two tanks and one pond. There are some carp in the pond.

**Writer: Akio Maruyama**

Keep JASA Spirit!!

